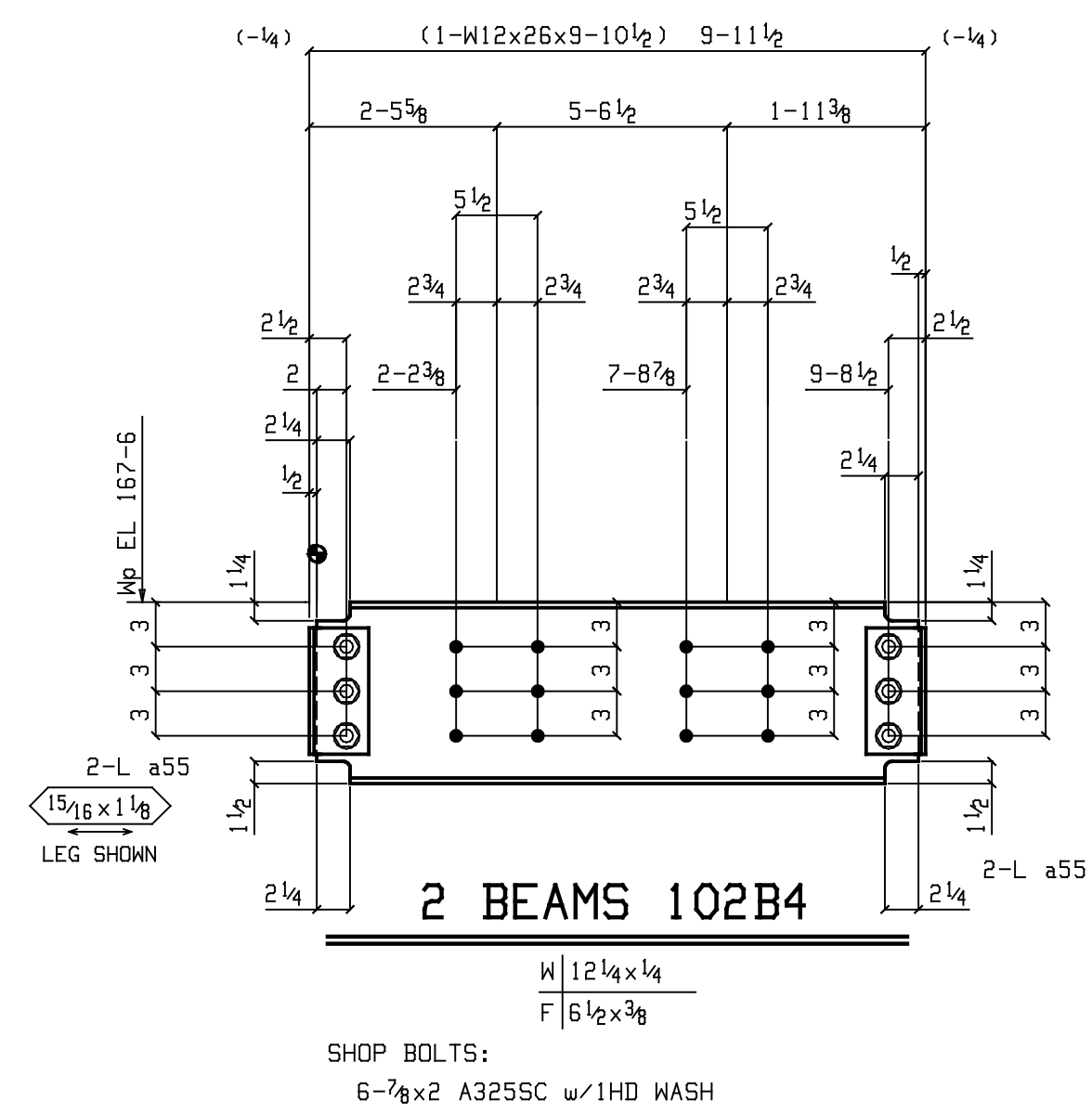
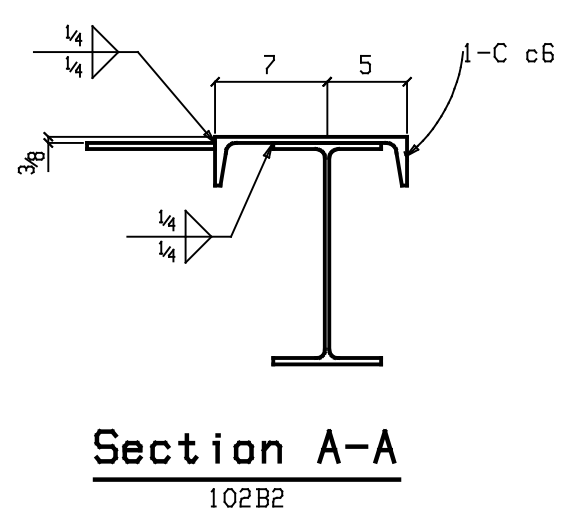
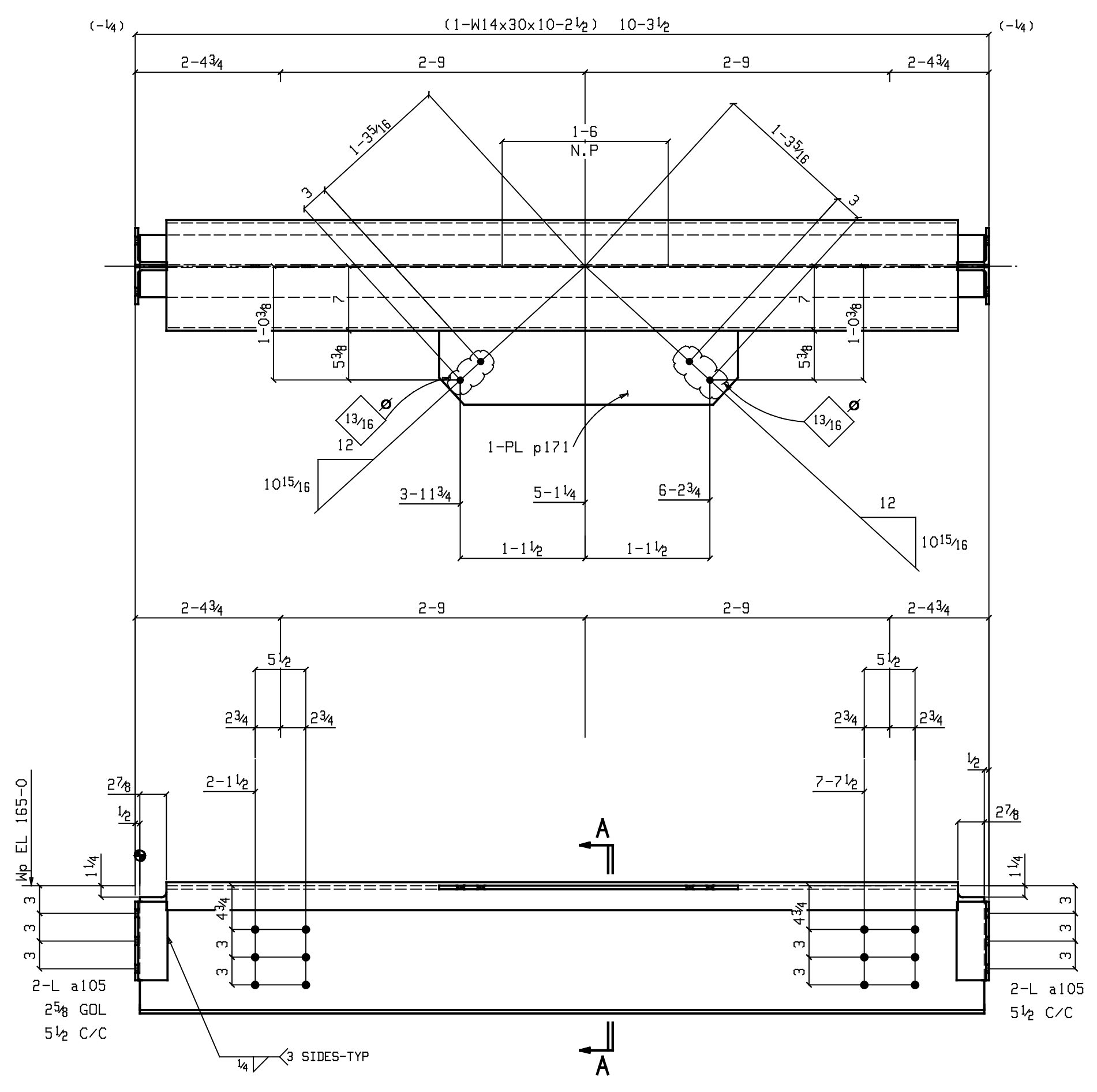


BILL OF MATERIAL						
ABM	MARK	NO. OF	MATERIAL	LENGTH	REMARKS	WEIGHTS
		PIECES		FT. IN.		IN lbs
	102B1	ONE	BEAM			973
1-2	102B1	1	W18x46	19 1 7/8	A992	881
4-3	a20	2	L4x3 1/2 x 5 1/8	1 2 1/2	A36	19
4-3	a89	2	L4x3 1/2 x 5 1/8	1 2 1/2	A36	19
	p125	1	PL 3/8 x 10 7/16	1 3 1/2	A36	13
	p25	1	PL 3/8 x 10 7/16	1 1 5/16	A36	11
	p71	1	PL 3/8 x 9 13/16	0 10 3/4	A36	11
	p58	1	PL 3/8 x 9 13/16	0 10	A36	10
		10	7/8 Dia A325SC	0 2 1/4	1HD WASH	10
	102B2	ONE	BEAM			598
1-4	102B2	1	W14x30	10 2 1/2	A992	306
4-5	a105	4	L4x3 1/2 x 3 1/8	0 8 1/2	A36	22
4-7	c6	1	C12x25	9 8 3/4	A36	243
	p171	1	PL 3/8 x 8	2 8 3/8	A36	27
	102B3	2	BEAM			187
	102B3	2	W14x30	2 4 3/4	A992	144
	a105	8	L4x3 1/2 x 3 1/8	0 8 1/2	A36	44
	102B4	2	BEAM			569
1-10	102B4	2	W12x26	9 10 1/2	A992	514
4-5	a55	8	L4x3 1/2 x 3 1/8	0 8 1/2	A36	44
		12	7/8 Dia A325SC	0 2	1HD WASH	11



PAINT SPECIFICATION
 SURFACE PREP: SSPC-SP7 BRUSH BLAST.
 SHOP PRIME: W/ RUST INHIBITIVE LEAD & CHROMATE FREE METAL PRIMER @ 2.0 TO 3.0 MILS DFT.
 FINISH: W/ ALKYD INDUSTRIAL ENAMEL @ 2.0 TO 3.0 MILS DFT.

- NOTES :
- 1) ALL MATERIALS ARE-A992,GR.50 U.N.O.
 - 2) REFERENCE DESIGN DWG.NO.- 41D747613
 - 3) FOR ERECTION DRAWING REF. DWG. NO.- E101, E102

EXTENSION DIMENSIONS ARE TAKEN FROM LINE.

SEQ#1

REV.	DATE	BY	REVISION	DATE	BY	REVISION	DESCRIPTION
0	06/06	YRK	RELEASED FOR FABRICATION				JOB NAME
A	06/06	YRK	ISSUED FOR APPROVAL				LOCATION
							CONTRACTOR -
							ARCHITECT
PRINTS ISSUED - FABRICATION DETAIL OF BEAM							
NO.	DATE	USE	NO.	DATE	USE	DESCRIPTION	
		APPROVAL			FINAL APPROVAL		
		DISTRIB.				DRAWN -YRK	DATE 06/06
		SHOP				CHECKED -NTN	DATE 06/06
						FINISH -SEE SHOP NOTE	Job No.
						WELD -E70XX	Dwg. No.
						HOLES -1 1/8 (U.N.O.)	D102

ONE BEAM 102B2

T.O. GUSSET PLATE MATCHES T.O.S. OF BEAM (U.N.O.)