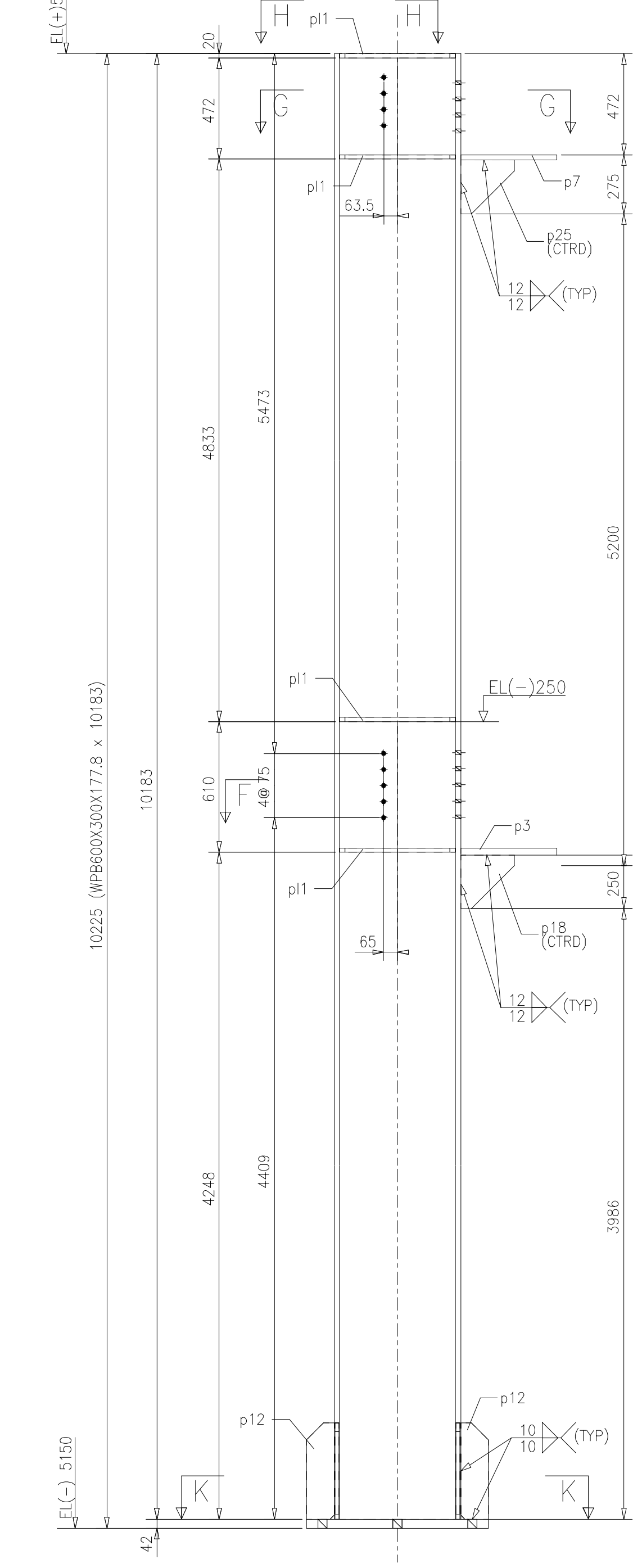
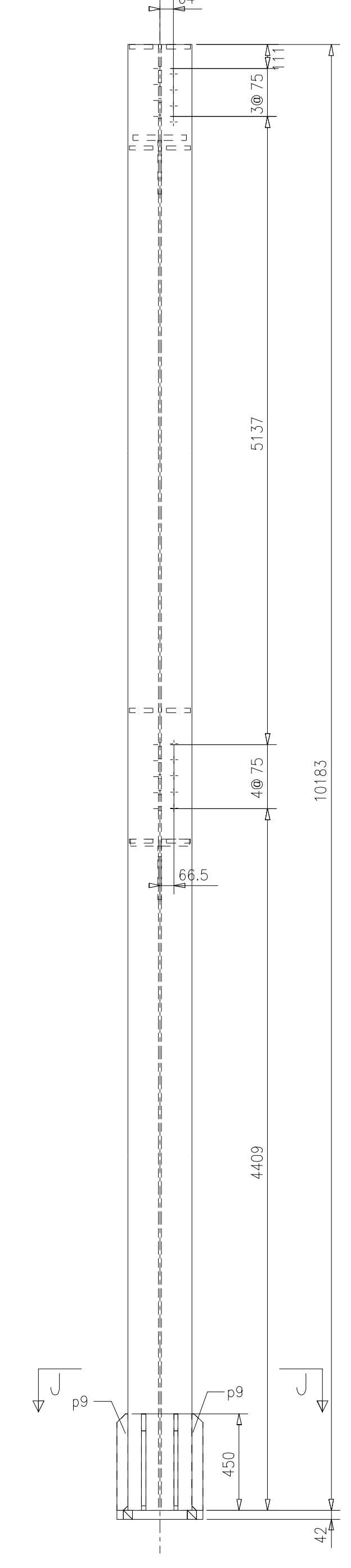
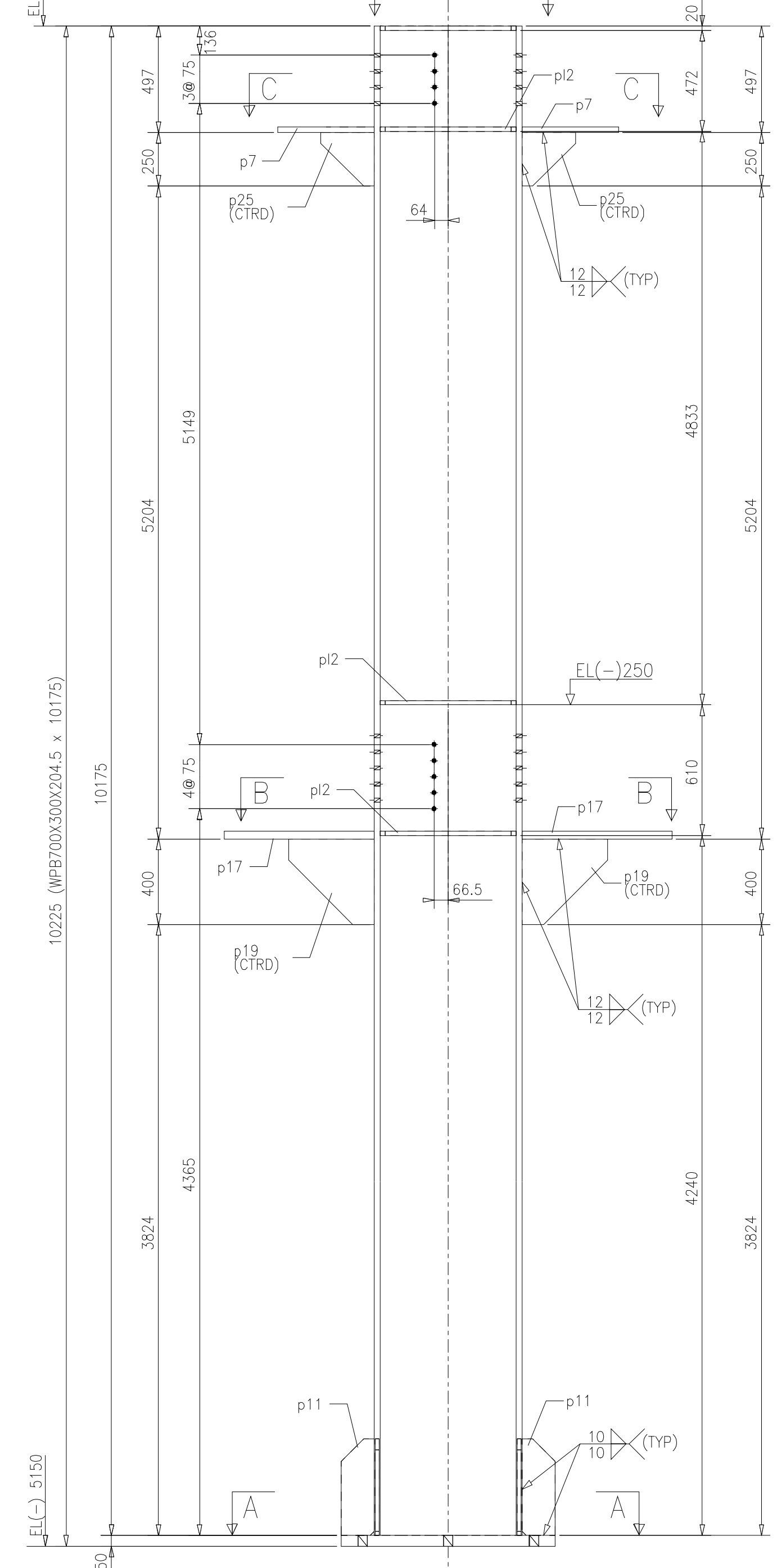
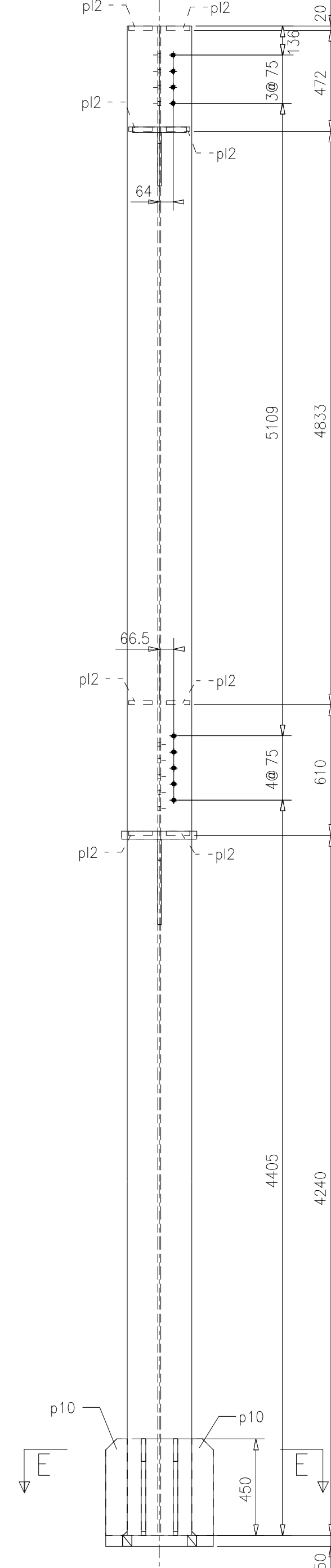
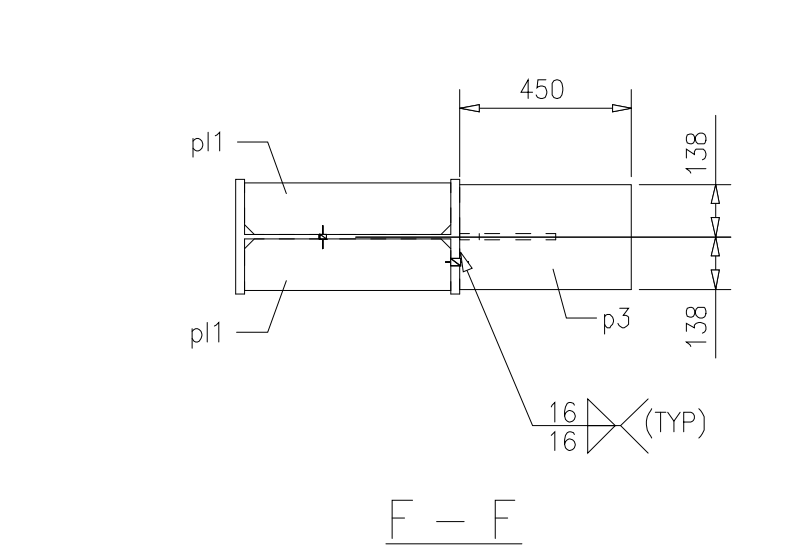
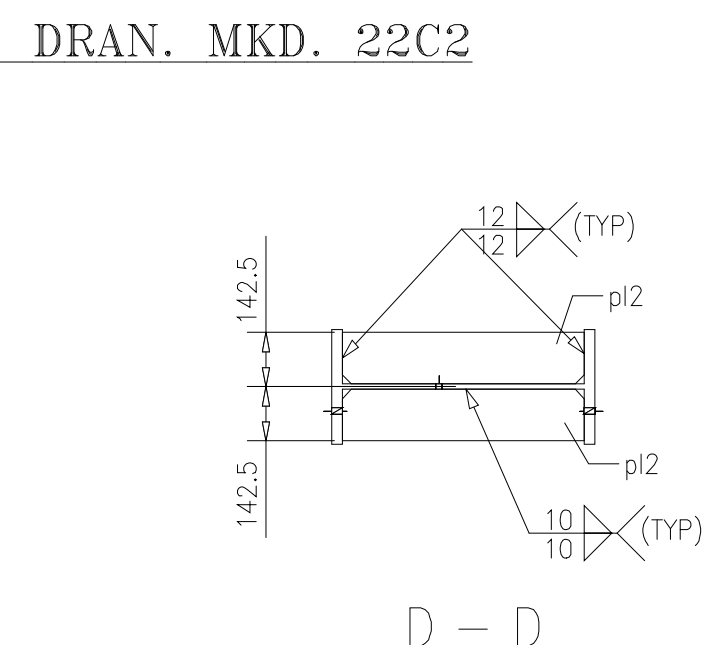
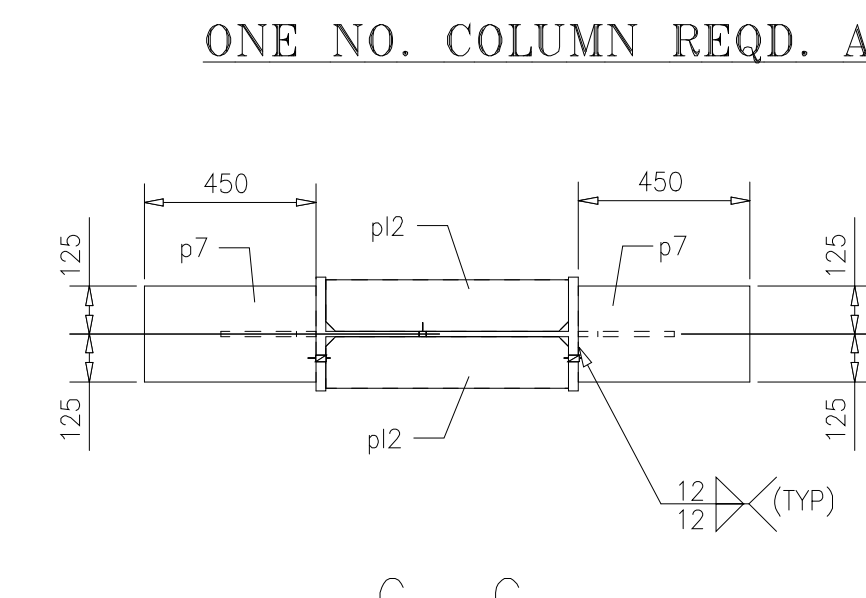
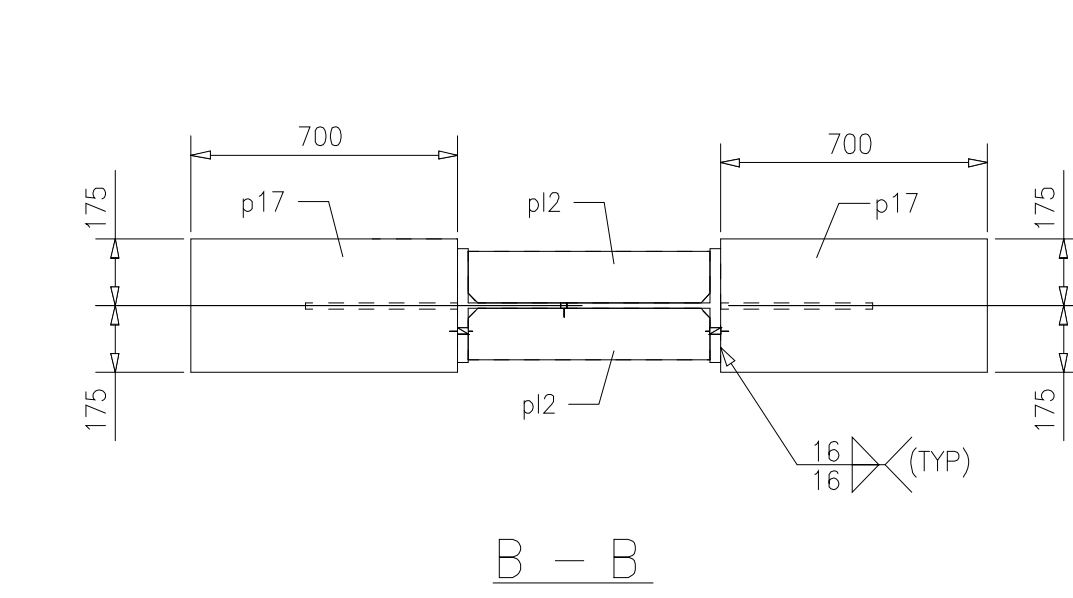
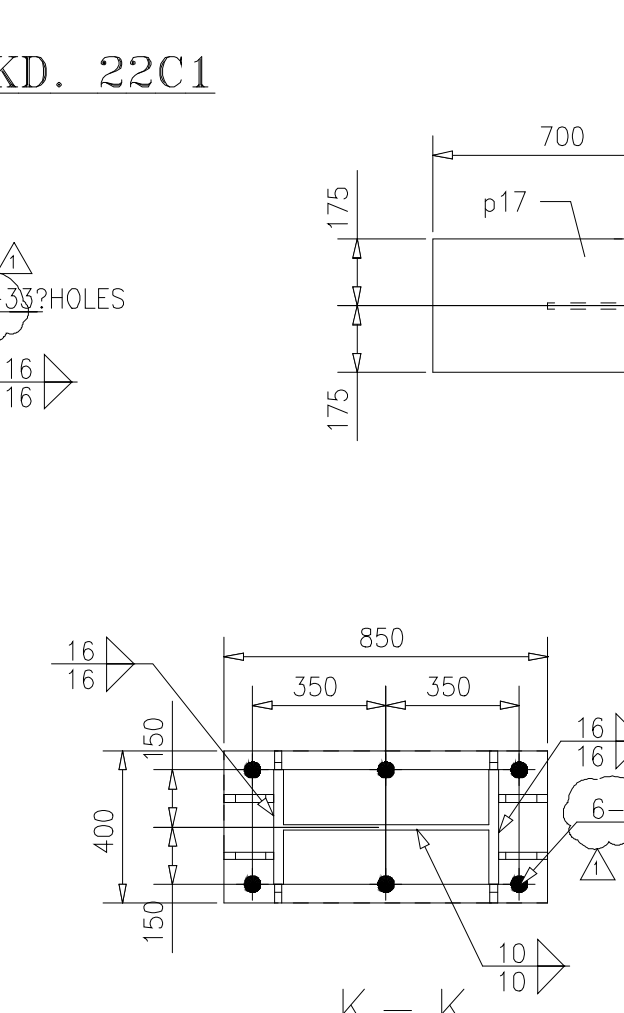
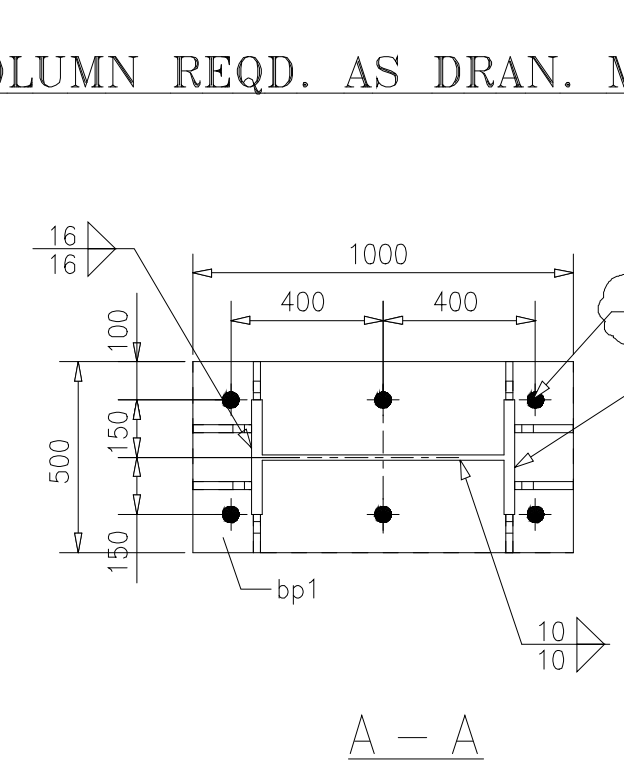
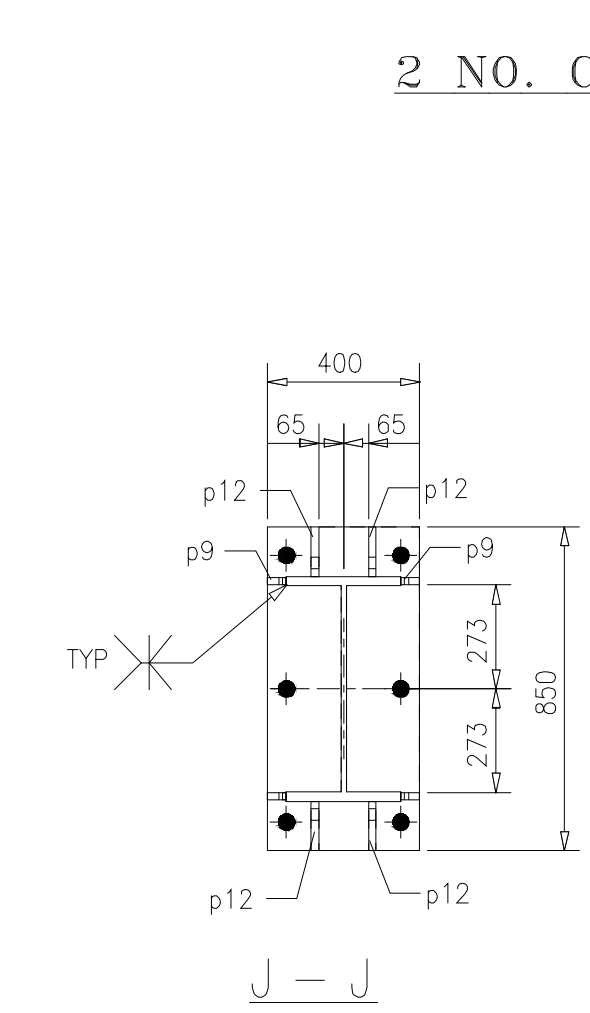
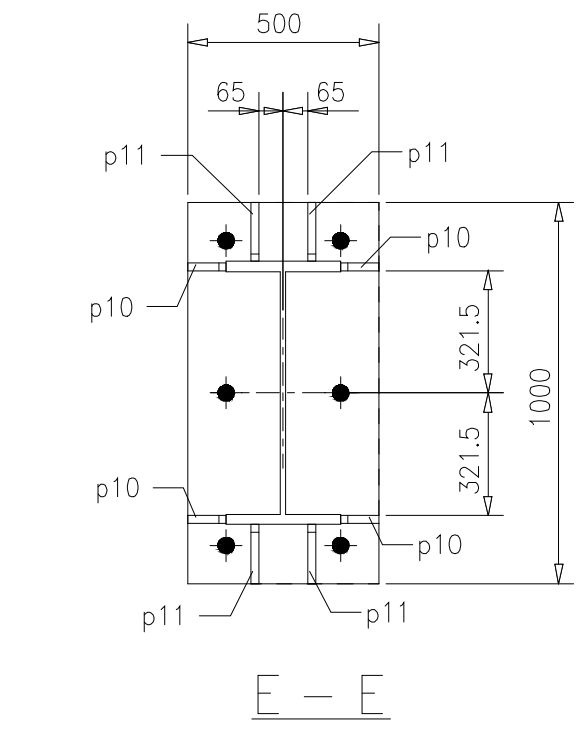


12	11	10	9	8	7	6	5	4	3	2	1
SH. 22	Next	0628-718									
Rev.											



BILL OF MATERIALS											
ITEM NO.	QTY	UNIT	DESCRIPTION	ITEM NO.	QTY	UNIT	DESCRIPTION	ITEM NO.	QTY	UNIT	DESCRIPTION
22C1											
22C1	202	ISMC	175x100x6.5x8	10175	1	2047	2047				
22C1	201	ISA	PL175x25	1000	1	1942	1942				
22C1	207	ISA	PL175x10	400	2	221	442				
22C1	208	ISA	PL175x10	400	4	68	272				
22C1	211	ISA	PL175x10	400	4	101	404				
22C1	217	ISMB	PL175x10	100	5	683	683				
22C1	218	ISMC	PL175x10	400	2	164	328				
22C1	225	ISA	PL175x25	200	2	53	107				
22C1	226	ISMC	PL175x10	400	7	134	538				
22C1	2007		SP. RT. 4E	55	4					17	554
GRAND TOTAL										1	2104



2 NO. COLUMN REQD. AS DRAN. MKD. 22C1

ONE NO. COLUMN REQD. AS DRAN. MKD. 22C2

KORUS Engg. Solutions Pvt. Ltd.
This Drawing is the Property of KORUS Engg. Solutions Pvt. Ltd. and as such it should not be used in any way whatsoever without their permission in writing.
It is returnable on completion of the order for which it has been issued.

NOTES & SPECIAL NOTE REF. DRG. NO.7 & 8

17.09.07	REVISED AS MARKED				
0	11.09.07	RELEASED FOR CONSTRUCTION	A.K.T.	S.K.	A.K.A.
Rev. No.	Date	Alteration	Design	Drawn	Chkd.

1.0 MTPA BAR MILL, 0.6 MTPA WIRE ROD MILL & BILLET STORAGE BAY
ZONE-10 ELECTRICAL CONTROL ROOM-2
DETAIL OF BEAMS

KORUS Engg. Solutions Pvt. Ltd.

Scale: 1:20

Design: A.K.T.
Drawn: S.K.
Chkd: A.K.A.
Appd: S.K.
Date: 31.08.07

Size: 0628-718
Sheet: 22

Rev. 1

ASTM STEEL LTD.

P. S. VISWANATHAN - 80075
BILLET-MILL, KURNOOL