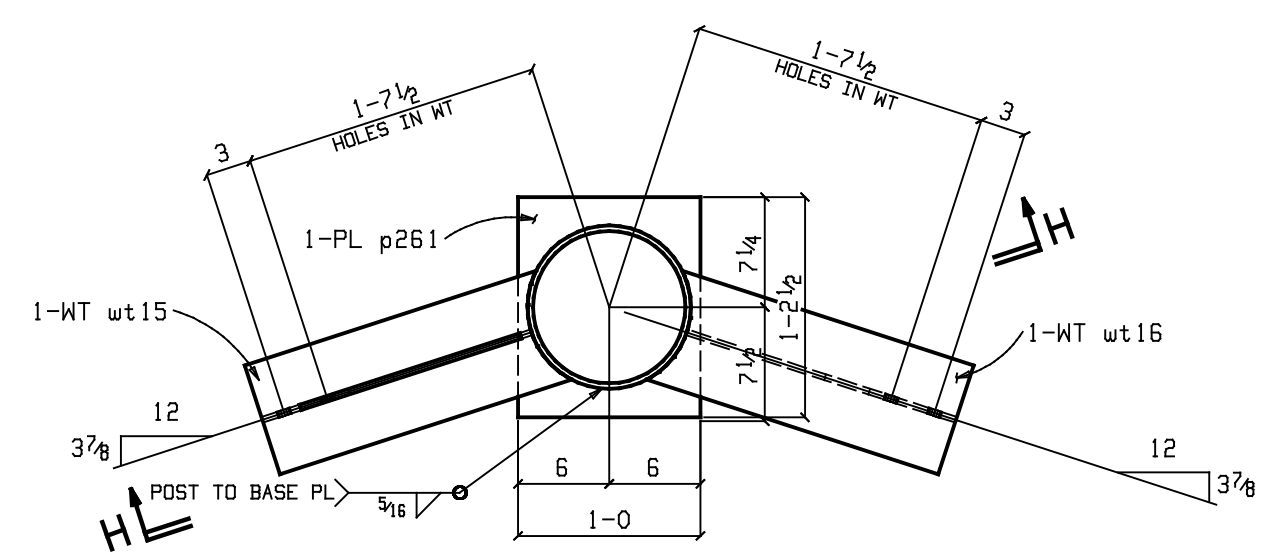
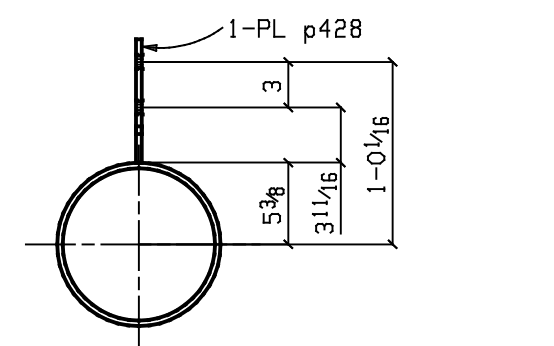
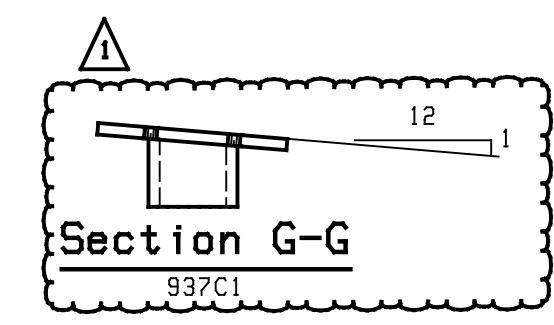


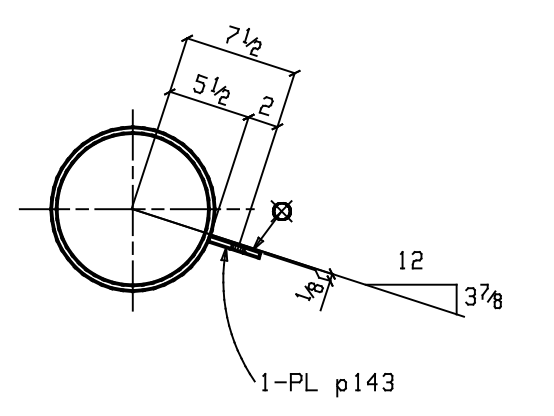
Section H-H
937C1



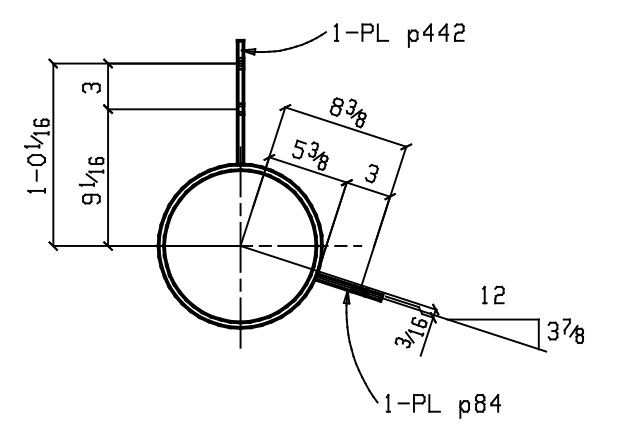
ONE COLUMN 937C1



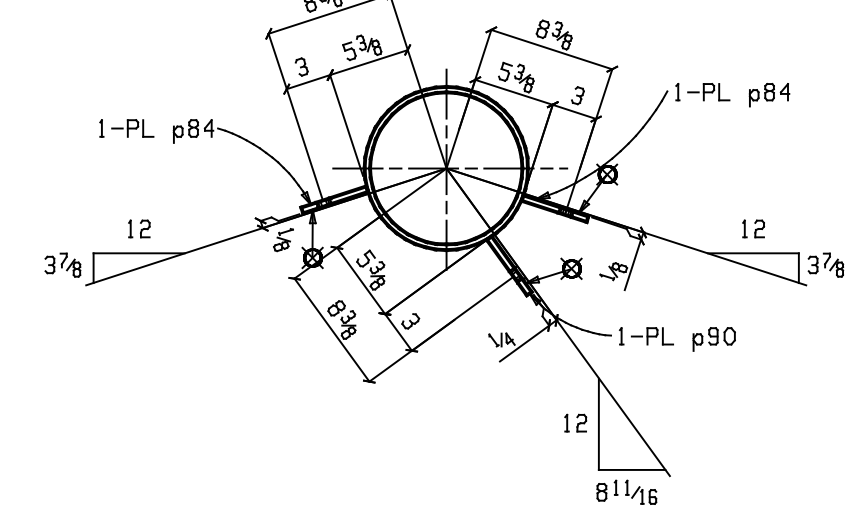
Section F-F
937C1



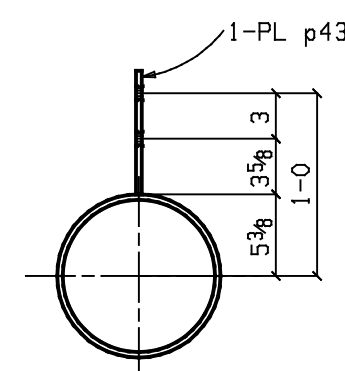
Section E-E
937C1



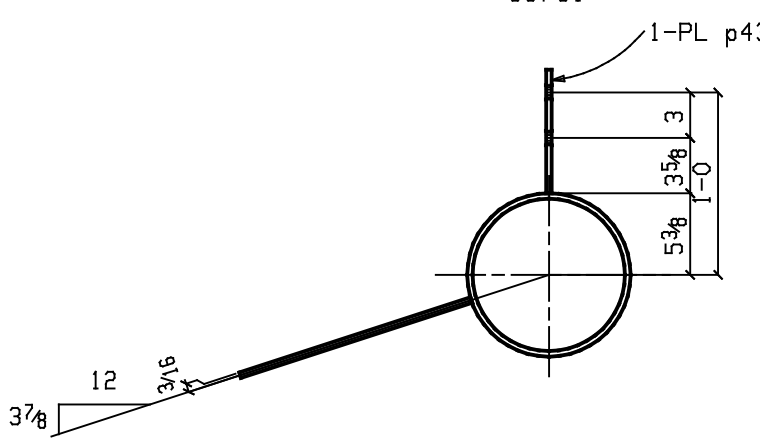
Section D-D
937C1



Section C-C
937C1



Section B-B
937C1



Section A-A
937C1

PAINT SPECIFICATION
 STRUCTURAL STEEL APPENDIX A.5 TYPE 2 SYSTEM
 SHOP PREP:- COMMERCIAL BLAST PER SSPC-SP6
 SHOP PAINT:-
 Prime with Carboline Carbozinc 11 Gray
 Inorganic Zinc at 3.0 TO 4.0 MILS DFT.

BILL OF MATERIAL

ABM	MARK	NO. OF PIECES	MATERIAL	LENGTH		REMARKS	WEIGHTS IN lbs
				FT.	IN.		
937C1		ONE	COLUMN				1823
937C1		1	PIPE 10 STD	38	6 3/8	MJE A53B	1560
wt16		1	WT8x27.5	1	8 3/16	A992-50	40
wt15		1	WT8x27.5	1	8 3/16	A992-50	40
p261		1	PL 1 1/2 x 12	1	2 1/2	A572-50	74
p225		1	PL 3/4 x 12 1/2	1	3	A36	40
p88		1	PL 3/8 x 13	1	4	A36	22
p90		1	PL 3/8 x 4 1/2	1	9	A36	10
p84		3	PL 3/8 x 4 1/2	0	9	A36	13
p428		1	PL 3/8 x 4	0	8 1/8	A36	3
p143		1	PL 3/8 x 3 1/2	0	6	A36	2
p431		6	PL 3/8 x 3	0	8 1/8	A36	16
p442		1	PL 3/8 x 3	0	8 1/8	A36	3

- NOTES :
- 1) ALL MATERIALS ARE-A992,GR.50 U.N.D.
 - 2) REFERENCE DESIGN DWG.NO.- 80394J
 - 3) FOR ERECTION DRAWING REF. DWG. NO.- E901

EXTENSION DIMENSIONS ARE TAKEN FROM LINE.

SEQ#9

NO.	DATE	USE	NO.	DATE	USE	DESCRIPTION	- FABRICATION DETAIL OF COLUMNS		
1	08/06	YRK			REVISED AS MARKED	JOB NAME			
0	08/06	YRK			ISSUED FOR FAB.	LOCATION			
A	07/12	YRK			ISSUED FOR APPROVAL	CONTRACTOR	-		
Δ					DATE BY REVISION	ARCHITECT			
					APPROVAL				
					DISTRIB.	DRAWN -YRK	DATE 07/12/06	CHECKED -NTN	DATE 07/12/06
					SHOP	FINISH -SEE SHOP NOTE	Job No.		
						WELD -E70XX	Dwg. No.		
CAD FILE: 00937		SCALE: 1" = 1'		HOLES -15/16" (U.N.D.)		D937			